



GRETSA UNIVERSITY - THIKA

UNIVERSITY EXAMINATIONS JANUARY - APRIL 2021 SEMESTER

CERTIFICATE IN DESKTOP PUBLISHING AND GRAPHIC DESIGN

COURSE CODE: CIPG 021

COURSE TITLE: ADOBE PHOTOSHOP CS4

DATE: 10 MAY 2021

TIME: 3.00 PM - 6.00

PM

INSTRUCTIONS TO CANDIDATES

1. SECTION A IS **COMPULSORY**.
2. SECTION B: ANSWER ANY OTHER **THREE** QUESTIONS.
3. **DO NOT** WRITE ANYTHING ON THIS QUESTION PAPER AS IT WILL BE AN EXAM IRREGULARITY.
4. ALL ROUGH WORK SHOULD BE AT THE BACK OF YOUR ANSWER BOOKLET AND CROSSED OUT.

CAUTION: All exam rooms are under CCTV surveillance during the examination period.

SECTION A: COMPULSORY

QUESTION ONE

- a) State the functions of the following tools in Adobe Photoshop
- i. Lasso tool [2 Marks]
 - ii. Crop tool [2 Marks]
 - iii. Horizontal type tool [2 Marks]
 - iv. Rectangular marquee tool [2 Marks]
 - v. Eraser tool [2 Marks]
- b) Name five parts of an Adobe Photoshop workspace [5 Marks]
- c) Photoshop features an intelligent mechanism to automatically reduce image blurring caused by camera motion. IMAGE 01 is an image that looks blurred because the camera shook during capture. Discuss the steps followed to reduce image blurring to create a sharp image



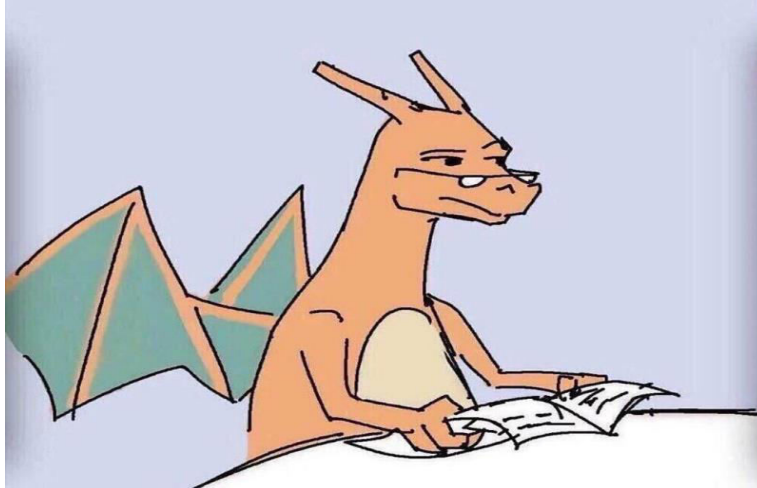
- d) Outline the steps followed when creating a new document in Adobe Photoshop [5 Marks]
- e) List five application areas of the Adobe Photoshop application [10 Marks]

SECTION B: ANSWER ANY THREE QUESTIONS

QUESTION TWO

- a) Discuss how you can duplicate the following image horizontally and set the exposure at +3.25.

[10 Marks]



- b) Explain how you can apply the Black & White adjustment layer to the following image

[10 Marks]



QUESTION THREE

Discuss how the Perspective Warp can adjust the perspective of the following image, such that the two sides of the building are equally foreshortened.

[20 Marks]

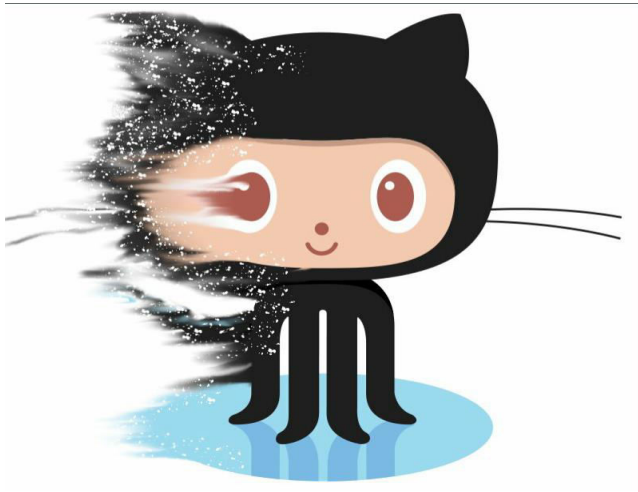


QUESTION FOUR

- a) You are trying to sharpen the following image and then create a duplicate of it. Explain how you can do that, and which tools can help you erase the tyres from the duplicate. [15 Marks]



- b) Explain why it is preferable to use the Polygonal Lasso Tool or Magnetic Lasso Tool instead of the Lasso Tool when drawing an outline on the following image. [5 Marks]



QUESTION FIVE

a) Explain how you can apply colour to the following image

[5 Marks]



b) The following is a picture used by a Real Estate company to advertise to their potential clients. Explain how you can insert text above the image as the company slogan, and how you can set the font to Magneto Bold font and set the size at 30 pt.

[10

Marks]



c) Explain how you can crop the image in Question Four (b) so that the distorted side is removed

[5 Marks]